

Send via Graph

Last Modified on 01/13/2026 11:26 am EST

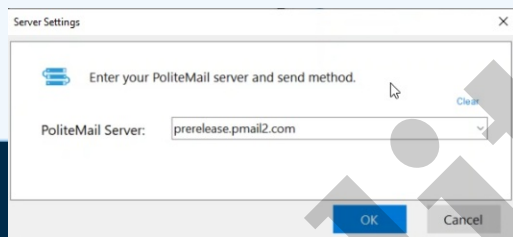
Applies To: ■ PoliteMail Desktop ■ PoliteMail Online ■ PoliteMail M365

Version: ■ 4.9 ■ 5.0 ■ 5.1+

Sending Via Graph

PoliteMail supports the option to send a Measured Message via the Graph Send Service. Sending via Graph eliminates the need to go through security appliances, such as ProofPoint or MimeCast, as it is trusted automatically. There is no need for a GPO, and requires much less technical configuration.

Sending via Graph is controlled via your Entra ID account and will need the same items as with [Sending via SMTP](#). If no Graph token is stored for a user, a dialog will appear to set up and for the user to give consent.



With the implementation of Sending via Graph, you will no longer see a dropdown to select your Send Method when logging into PoliteMail.

As of version v5.35.5632.4044, the [Address Auto-Reply](#) feature is fully functional when sending via Graph.

Selecting Send via Graph

Setting the Default Send Method

A System Admin can select which Send Method to use as the default for all users under **UI Overrides > Sending > Default Send Method**.

Setting the Send Method for a Specific Message

Outlook Desktop	Microsoft 365	PoliteMail Online
---------------------------------	-------------------------------	-----------------------------------

Outlook Desktop	Microsoft 365	PoliteMail Online
Once PoliteMail Measurement is turned on for the message, an additional option for Microsoft Graph will display the Send Method dropdown in addition to PoliteMail Server and Outbox.	You will see an extra option in the Send dropdown under the blue 'Send' button to select Graph as your server.	Send Options > Send Method. An additional option for Microsoft Graph will display.

Sending via Graph is subject to send limitations imposed by Exchange, but using Shared Mailboxes is an easy workaround. See [this link](#) for more information.

PoliteMail