

# What is the Advanced Analytics Dashboard?

Last Modified on 02/13/2025 4:41 pm EST

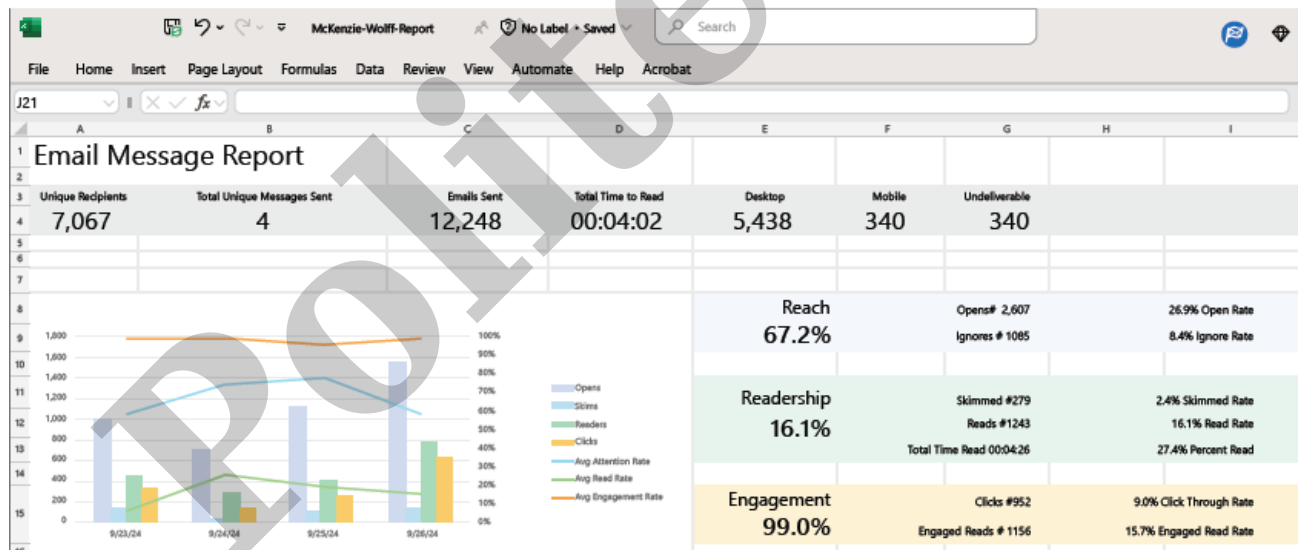
Applies To: ■ PoliteMail Desktop ■ PoliteMail Online ■ PoliteMail M365

Version:  4.9  5.0  5.05+

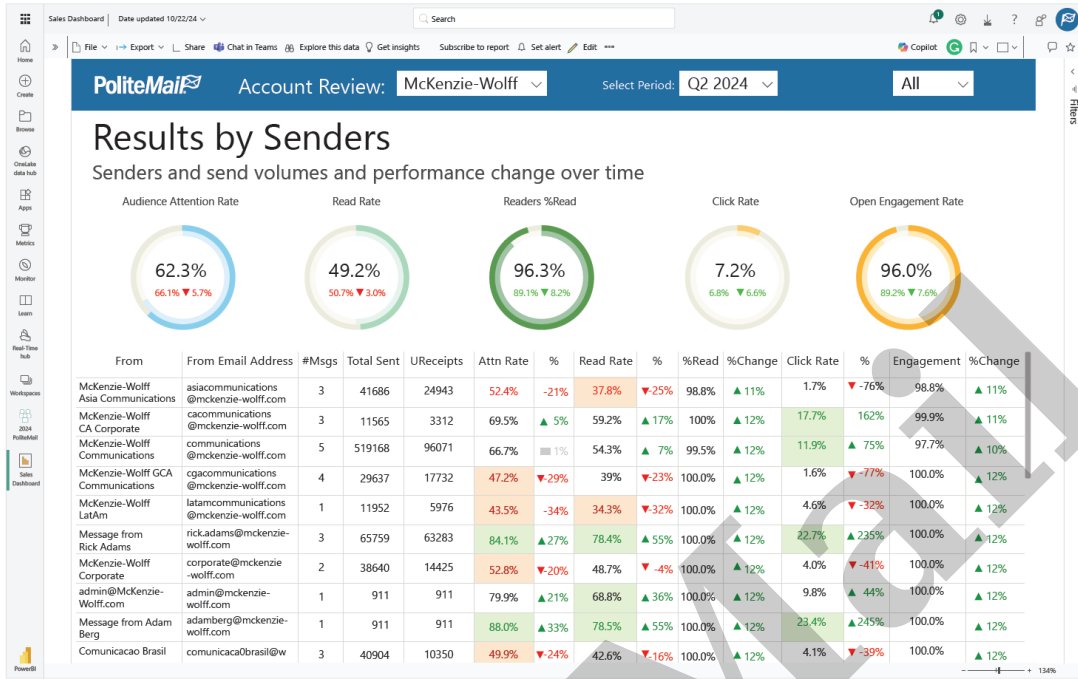
PoliteMail metrics are awesome and powerful, but if your reporting is typically in Excel or you use dashboards through PowerBI, wouldn't it be even better if metrics data could link with Excel or PowerBI in real time?

The Advanced Analytics Dashboard provides just that, allowing you to sync PoliteMail metrics in Excel or PowerBI! This allows you to:

- Share live data reports in Excel files or PowerBi dashboards
- Produce your own custom reports, create your own KPIs and choose which data fields to display
- Combine other data sources into your report
- Modify fonts, colors, styles and charts. Utilize your own formulas or pivot tables, add custom visualizations, and modify filters to generate custom data reporting to fit your unique needs
- Easily track year-over-year and month-over-month trends



Connect with your sales representative for more information. You can start with our free, prebuilt Excel report, and go from there!



PoliteMail