

PoliteMail and Group Policy Objects (GPO)

Last Modified on 06/01/2023 2:13 pm EDT

Applies To: PoliteMail Desktop PoliteMail Online PoliteMail O365

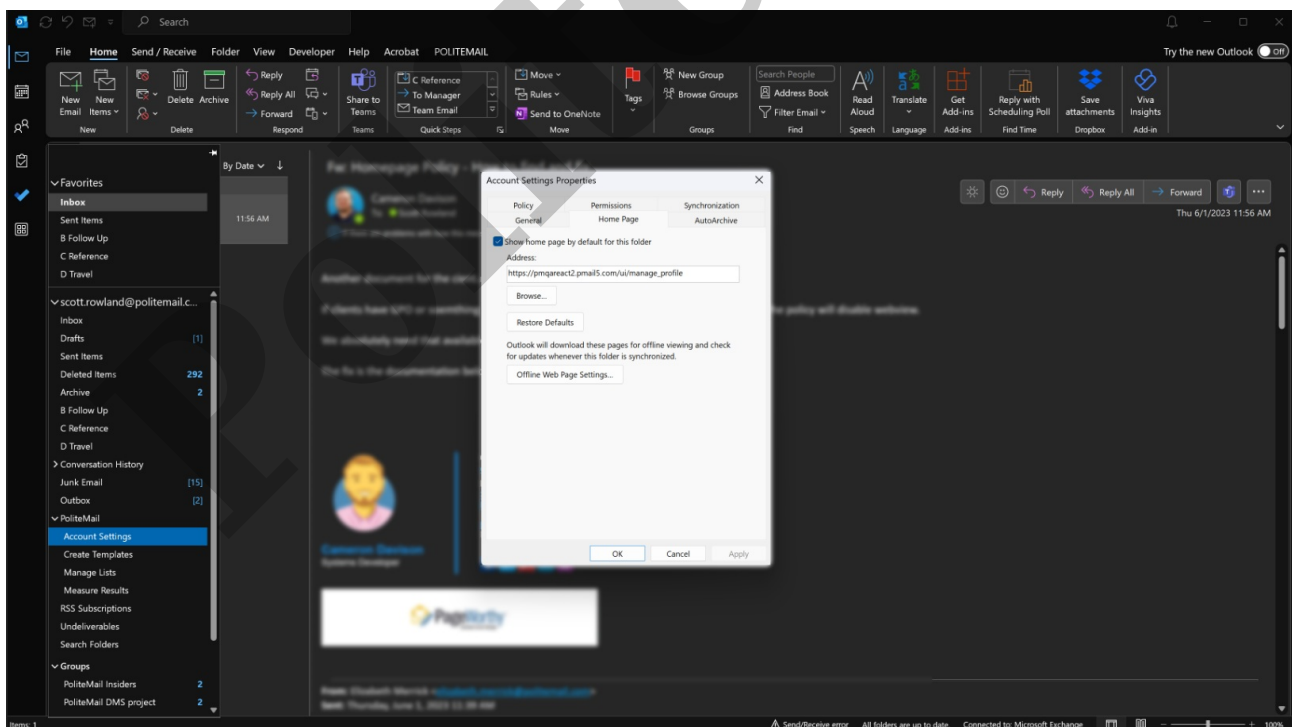
Version: 4.9 5.0 5.05

Group Policy Objects (GPOs) often apply a policy to Outlook throughout an organization to prevent web pages from being displayed within the Outlook client, to prevent bogus or unsecure links. A GPO can also disable the Home Page tab on an Outlook folder; however, this functionality is required for PoliteMail for the Outlook desktop to function.

Are You Being Blocked?

To see if a GPO is preventing access:

1. Click on the drop-down arrow next to the PoliteMail folder in Outlook, and then right-click on 'Account Settings'. (You can actually do this with any folder in Outlook)
2. An Account Settings Properties window appears. You should have a 'Home Page' tab like the below screenshot. If not, it's being blocked.



During installation, the PoliteMail installation application will make this change if it is not already there. However, a GPO may override this, and the GPO may need to be modified.

During installation, the PoliteMail application will set
[HKEY_CURRENT_USER\Software\Microsoft\Office\{version}\Outlook\Security
"EnableRoamingFolderHomepages"=dword:00000001.

Updating the Group Policy

Apply the settings below. Make sure to set the Disabled Value to zero (in other words, this will disable the disable).

Group Policy Name/Description	"Do not allow Home Page URL to be set in folder Properties"
Registry Hive	HKEY_CURRENT_USER
Registry Path	software\policies\microsoft\office\16.0\outlook\webview
Value Name	disabled
Value Type	REG_DWORD
Enabled Value	1
Disabled Value	0